

The screenshot displays the S213 Builder software interface for U ITactical Funds Corp. The interface includes a header with the company name and license information, a language selection dropdown, and a main data entry area with various fields for report configuration. Below this are buttons for opening and exporting S213 XML reports. The bottom section shows two tables: 'ASSETS' and 'LIABILITIES', each with a 'TOTAL' column and a list of items with their respective values. A checkbox is visible next to the 'ASSETS' table header.

12. Help contact info

1. Customer information

2. Language selection

11. Admin functions

10. Switch S213 – S103 report

9. Open S213 XML report

8. Quick reminder / help

7. Enhanced control checkbox

6. Intelligent capture & auto-filling

5. Enhanced eraser function

3. Check & export function and special Cross-Check feature

4. Smart « Total » handling

1. Customer information

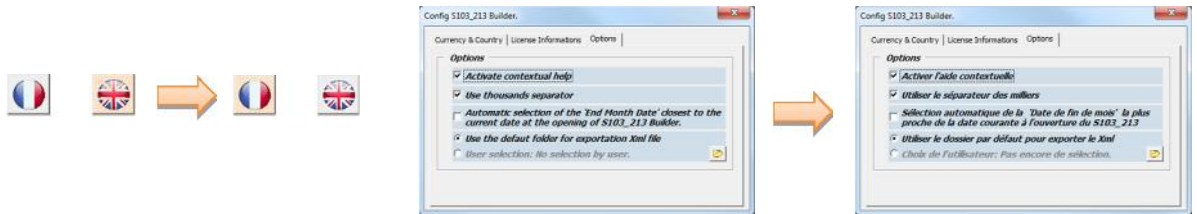
Visibility Declarant company name can be set by the user, one copy of the tool by issuer
Consolidation Yearly licensing of the tool includes now any major update required by the regulators



One directory and one copy by company. Keep your captured data from months to months

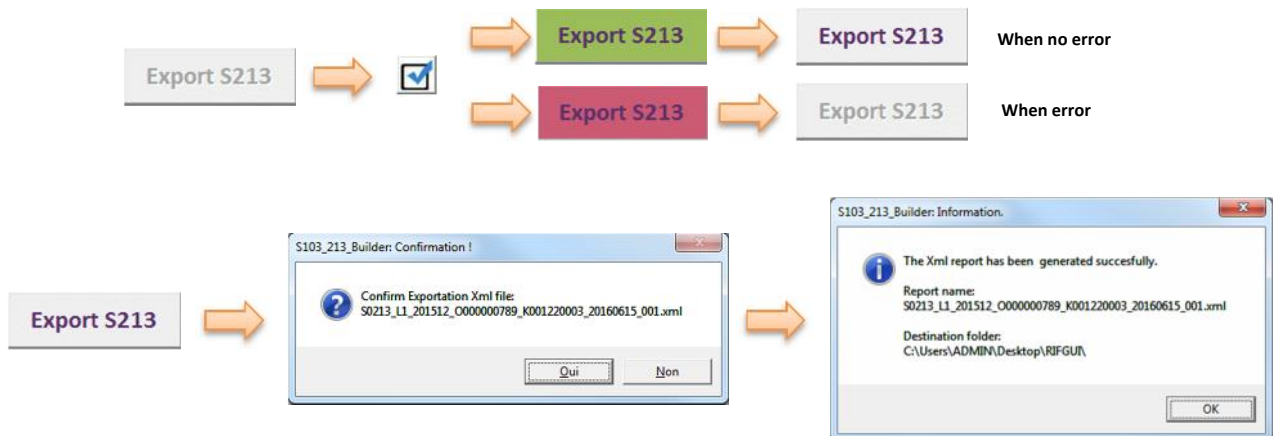
2. Language selection

Interface Choose between English / French languages
 Full translation (text buttons, comments, infos / warnings / error messages)



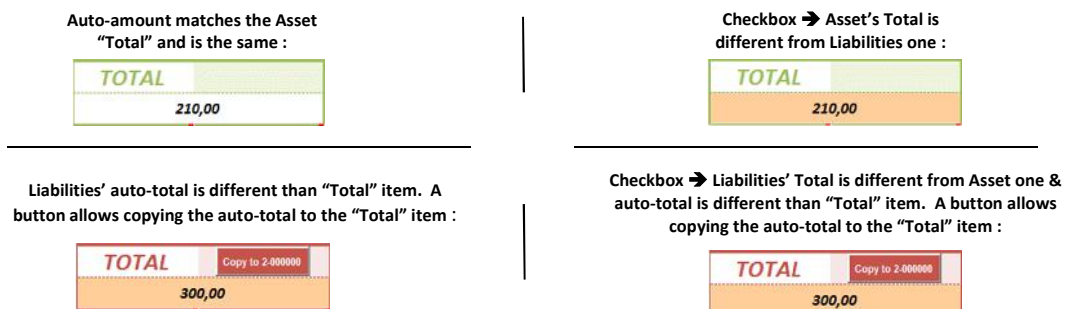
3. Check & export function and special Cross-Check feature

Consolidation Button is only available after a successful "Checkbox verification"
Visibility Button will flash green or red depending on check results
Consolidation No export possible if the macro spots at least one error
Consolidation Supplementary controls added to limit initial capture errors
Consolidation Specific cross-check function to verify TPT monthly numbers with S213 quarterly or S103 monthly ones



4. Smart « Total » handling

Consolidation Automatically calculates and displays the total amount of all items
Visibility Background colour changes if the calculated amount is different than "Total" item or when the Asset's Total is different than Liabilities one.
Interface Dynamic "Copy to" button allows copying the calculated amount to the "Total" item



5. Enhanced eraser function

Interface
Interface

Delete item lines easily in 1 clic
Double clic the icon to remove all the line of a table

1-007000	AE	XXX	12100	1999-999	100,00
1-000000	XX	XXX	90000	1999-999	210,00
1-006000	AD	XXX	90000	1999-999	90,00
1-003000	XX	XXX	90000	1999-999	20,00



1-007000	AE	XXX	12100	1999-999	100,00
1-000000	XX	XXX	90000	1999-999	210,00
1-006000	AD	XXX	90000	1999-999	90,00
1-003000	XX	XXX	90000	1999-999	20,00

S103_213_Builder: Please confirm.

Are you sure you want to delete your selection: [826:G27] from ASSETS table?

Qui Non

6. Intelligent capture & auto-filling

Interface
Interface

Auto-complete mandatory fixed data based on item category chosen
Narrow choice list depending on the item category

Item	Country	Currency	Sector	Initial Maturity	Reported Amount
1-003000					
1-003000					
1-005000					
1-006000					
1-007000					
1-090010					
1-099999					
1-000000					



Item	Country	Currency	Sector	Initial Maturity	Reported Amount
1-000000	XX	XXX	90000	1999-999	

7. Enhanced control checkbox

Consolidation
Consolidation
Visibility

Complete verification : captured values, Totals, difference of Totals, occurrences of items
Export button is enabled only if no error found
On error : Export button disabled
Displays relevant error text
Highlight errors in the tables



S103_213_Builder: Error(s) in table(s)!

ASSET table:
- 'Reported Amount' in cell [G27] : is obligatory to be positive with the item [1-006000]

LIABILITIES table:
- 'Country Code' in cell [K26] is obligatory to insert the [XX] value for the item [2-000000]

OK



Open S213

50213_L1_201512_000000789_K001220003_20160615_001.xml

Export S213

ASSETS						TOTAL
Item	Country	Currency	Sector	Initial Maturity	Reported Amount	
1-007000	AE	XXX	12100	1999-999	290,00	
1-000000	XX	XXX	90000	1999-999	300,00	300,00
1-006000	AD	XXX	90000	1999-999	-10,00	
1-003000	XX	XXX	90000	1999-999	20,00	

LIABILITIES

LIABILITIES						TOTAL
Item	Country	Currency	Sector	Initial Maturity	Reported Amount	
2-099999	AF	AED	50000	R5A-999	200,00	
2-000000	AF	XXX	90000	1999-999	300,00	300,00
2-003000	XX	XXX	90000	1999-999	100,00	

8. Quick reminder / help

Interface

Position cursor on top of fixed cells or column name displays useful information

Item	Item
	1-002000 - Deposits and loan claims
	1-003000 - Debt securities held
1-007000	1-005000 - Equity and investment fund shares/units held
1-006000	1-006000 - Non-financial assets
1-000000	1-007000 - Financial derivatives
1-006000	1-090010 - Aremaining assets - Accrued interest on loans
1-003000	1-099999 - remaining assets - Other
	1-000000 - Total of assets

Rubrique	Rubrique
	1-002000 - Dépôts et réances de prêts
	1-003000 - Titres de créance détenus
1-007000	1-005000 - Participations, actions et titres de fonds d'investissement détenus
1-006000	1-006000 - Actifs non financiers
1-000000	1-007000 - Instruments financiers dérivés
1-006000	1-090010 - Autres actifs / Intérêts courus non échus
1-003000	1-099999 - Autres actifs / Autres
	1-000000 - Total des actifs

9. Open S218 XML report

Interface

Browse, open & load any S218 XML report

Open S213



Browse and select XML report



S103_213_Builder: Confirmation !

Please confirm to import data from the file:
50213_L1_201512_000000789_K001220003_20160615_001.xml

Qui Non

10. Switch S213 – S103 report

Interface

Choose between S213 & S103 report

Select S213 or S103

11. Admin functions

Consolidation
Interface
Options

Allow to add or remove a currency or country code
Displays licence information
Allow content's configuration for comments and calculated amounts

12. Help contact info

Support

Need help ? 1 click contact info window