

The screenshot displays the S219 Builder V1.1 interface for 'U IT insurance Corp'. The interface includes a header with the company name and logo, a version indicator 'Layout 0 v 1.0', and a license notice. Below the header are several data entry fields for Version, End Month Date, Currency, Reporter, Creating Date, Closing Date, Layout, and Declarant. A central section contains 'Open S219' and 'Export S219' buttons, with a file name field in between. The main area is divided into 'ASSETS' and 'LIABILITIES' sections, each with a table of columns: Item, Country, Currency, Sector, and Reported Amount. A checkbox is visible between the two tables. Callout boxes point to various features: 1. Customer information (company name), 2. Language selection (flags), 3. Protected export function (Export S219 button), 4. Enhanced eraser function (trash icon), 5. Intelligent capture & auto-filling (checkbox), 6. Enhanced control checkbox (checkbox), 7. Quick reminder / help (trash icon), 8. Open S219 XML report (Open S219 button), 9. Admin functions (S219 Builder icon), and 10. Help contact info (UIT logo).

1. Customer information

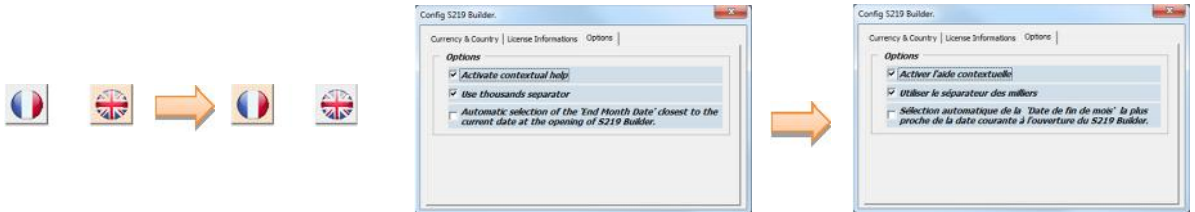
Visibility Declarant company name can be set by the user, one copy of the tool by issuer
Consolidation Yearly licensing of the tool includes now any major update required by the regulators



One directory and one copy by company. Keep your captured data from months to months

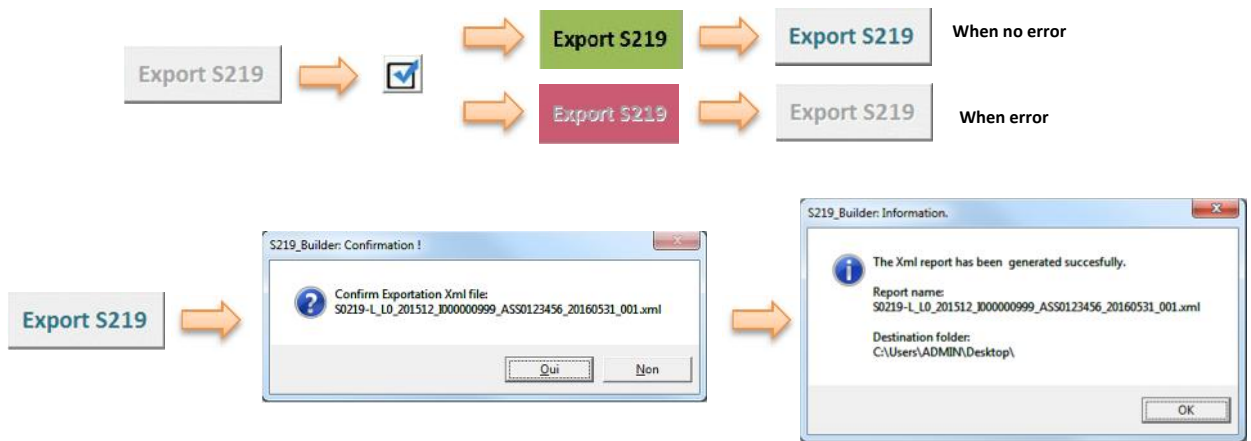
2. Language selection

Interface Choose between English / French languages
Interface Full translation (text buttons, comments, infos / warnings / error messages)



3. Protected export function

Consolidation Button is only available after a successful "Checkbox verification"
Visibility Button will flash green or red depending on check results
Consolidation No export possible if the macro spots at least one error



4. Enhanced eraser function

Interface Delete item lines easily in 1 clic
Interface Double clic the icon to remove all the line of a table



5. Intelligent capture & auto-filling

Interface
Interface

Auto-complete mandatory fixed data based on item category chosen
Narrow choice list depending on the item category

6. Enhanced control checkbox

Consolidation
Consolidation
Visibility

Complete verification : captured values, Totals, difference of Totals, occurrences of items
Export button is enabled only if no error found
On error : Export button disabled
Displays relevant error text
Highlight errors in the tables

7. Quick reminder / help

Interface

Position cursor on top of fixed cells or column name displays useful information

8. Open S219 XML report

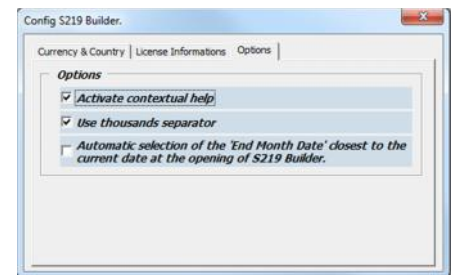
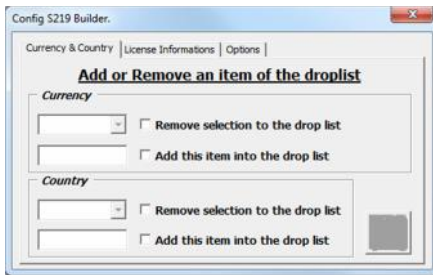
Interface

Browse, open & load any S219 XML report

9. Admin functions

Consolidation
Interface
Options

Allow to add or remove a currency or country code
Displays licence information
Allow content's configuration for comments and calculated amounts



10. Help contact info

Support

Need help ? 1 click contact info window

