

The screenshot shows the TPTIBS Builder V3.2 interface for 'U IT Financial Company'. The interface includes a header with the company name and logo, and a main area with various data entry fields and a table. Callouts point to specific features:

- 10. Admin functions:** Points to the 'TPTIBS Builder' logo.
- 11. Help contact info:** Points to the 'UIT' logo.
- 1. Customer information:** Points to the company name 'U IT Financial Company'.
- 2. Language selection:** Points to the language selection icons (French and English).
- 9. Smart delete:** Points to the trash icon.
- 3. Check & export + Cross-Check:** Points to the 'Check & Export Xml' button.
- 4. Quick-Update:** Points to the 'D.Up' button.
- 5. Direct cells edit & Paste function:** Points to the 'Paste the clipboard' button.
- 8. Main Capture Tool:** Points to the table header.
- 7. Contextual help & reminders:** Points to the table.
- 6. Full data table:** Points to the table.

Version	End Month Date	Currency	Reporter	Open a TPTIBS report (.xml)
1.4	2015-12-31	EUR	Type: 35 Code: 0012355	Paste the clipboard
Creating Date	Closing Date	Layout	Declarant	
2017-03-17T11:17:23	2015-12-31	1	Type: 35 Code: 0012345	

LineID	Item	Country	Currency	Sector	Code Type	Code	Hold Security Type	Custodian Bank Country	Debt Equity	Quotation Type	Nominal Amount	Nominal Currency	Number Of Units	Reported Amount
Edit Line	1-003000	XX	XXX	90000	1	FR0000133308	1	AD	debt	1	1000	USD		3000
Edit Line	1-003000	XX	XXX	90000	1	FR0003500008	01	AD	debt	1	1000	USD		3500
Edit Line	1-003000	XX	XXX	90000	1	US5949181045	01	AD	debt	1	1000	USD		3500
Edit Line	2-002050	XX	XXX	90000	1	CH0044328745	05		debt	2			125	7500
Edit Line	2-003000	XX	XXX	90000	1	CH0102993182	04		debt	1	14	AFN		10000
Edit Line	2-003000	XX	XXX	90000	1	CH0114405324	04		debt	1	14	AFN		5000
Edit Line	2-C05000	XX	XXX	90000	1	IE00B446CM77	04		equity	2			85	10000
Edit Line	2-C05000	XX	XXX	90000	1	IE00B4BNMY34	04		equity	2			85	2501
Add a line														

1. Customer information

Visibility
Consolidation

Declarant company name can be set by the user, one copy of the tool by issuer
Yearly licensing of the tool includes now any major update required by the regulators

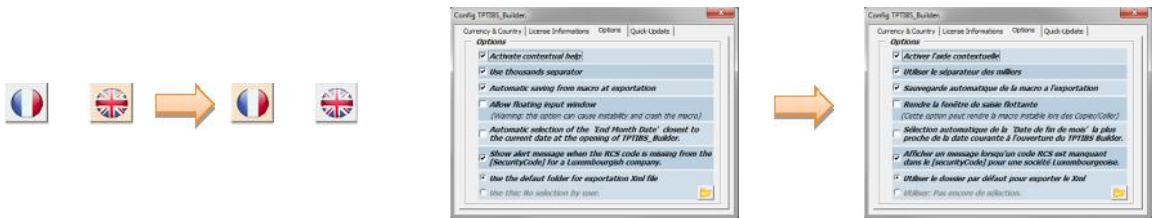


One directory and one copy by company. Keep your captured data from months to months

2. Language selection

Interface

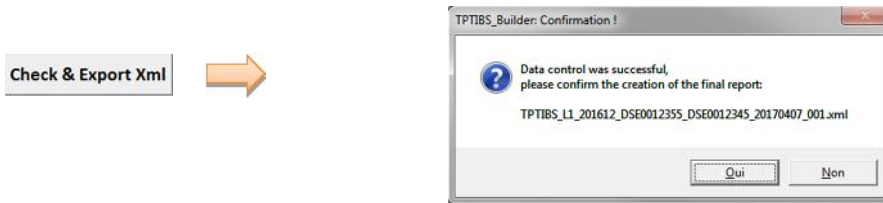
Choose between English / French languages
Full translation (text buttons, comments, info / warnings / error messages)



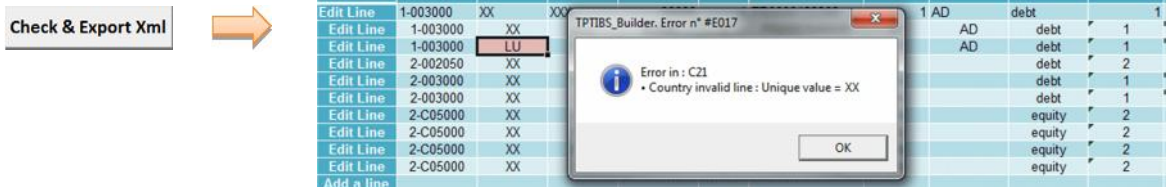
3. Check & export + Cross-Check

Consolidation
Consolidation
Consolidation
Consolidation

Perform a verification of all the values
No export possible if the macro spots at least one error
Many supplementary controls, quality filters added to limit initial capture errors
Specific cross-check function to verify TPT monthly numbers with S216 quarterly ones



Error message during "Check"
Highlighting the wrong value



4. Quick-Update

Consolidation
Automation

Update the whole table in a few clicks using a configurable data importation
All amounts value can be updated using a reference data file (similar to a pivot table)

5. Direct cells edit & Paste function

Visibility Interface Interface

On large screen allows to see all data on a single screen
 Edit directly in the cells for small correction
 Copy/Paste data buton from another sheet or text document for fast filling

6. Full data table

Zoomed out view of the whole TPTIBS data table

High visibility on large screens

7. Contextual help & reminders

Interface Interface

Short help or summary displayed for each value area
 Available in English or French - Can be deactivated in the admin menu

Custodian Bank Country

Custodian Bank Country : The country of the custodian bank (asset side)

The variable indicates the country of the custodian bank. It is essential for the BCL to know whether a security is held or not with a custodian Luxembourg bank. If the security is not held within a custodian bank, the country code to report must be «XX».
 (Code ISO 3166)

Security Type

The security type is identified by a code:

Item	Authorized values
1-003000	F.3
1-005000	F.511, F.512, F.519, F.52
2-002050	F.3, F.511, F.512, F.519, F.52
2-003000	F.3
2-005000	F.511, F.512, F.519

F.3 : Debt securities
 F.511 : Quoted shares
 F.512 : Unquoted shares
 F.519 : Other equity
 F.52 : Shares/units of investment funds

Quotation Type

code = 1 : Cotation en pourcentage.
 En capital nominal (face value) lorsqu'il s'agit de titres dont les prix sont exprimés en pourcentage de la valeur nominale.
 La devise du nominal doit être renseignée pour indiquer la devise d'expression du capital nominal.

code = 2 : Cotation en devise.
 En nombre de titres dans les autres cas.
 Le capital nominal et la devise du nominal ne doivent pas être renseignés lorsque la quantité est exprimée en nombre de titres.

RUBRIQUE :

- Actifs -

- 1-003000 : Titres de créance détenus
- 1-005000 : Titres de participation détenus

- Passifs -

- 2-002050 : Ventes à découvert de titres
- 2-003000 : Titres de créance émis
- 2-005000 : Capital, réserves et résultats

8. Main Capture Tool

Visibility Consolidation Interface

All-in-one screen
 Enable/Disable sections and narrow choices lists dynamically upon item or security type
 Navigate through records, delete, clone easily

Item selection

Item	1-003000
1-003000	Debt securities held
1-005000	Equity and investment fund shares/units held
2-002050	Short sales of securities
2-003000	Debt securities issued
2-CD5000	Capital, share premiums, reserves and results

Security type selection

Droplist values

holdSecurityType	01	Securities held and not affected by
custodianBankCountry	02	Securities lent
custodianBankCountry	03	Securities sold in a repurchase agree

nominalCurrency	AED	UNITED ARAB EMIRATES
nominalCurrency	AFN	AFGHANISTAN
nominalCurrency	ALL	ALBANIA
nominalCurrency	AMD	ARMENIA
nominalCurrency	ANG	CURAÇAO, SINT MAARTEN
nominalCurrency	ARS	ARGENTINA
nominalCurrency	AUD	AUSTRALIA
nominalCurrency	AWG	ARUBA

Dynamic sections

Droplist values

sector	1100	Central government
securityType	1200	State government
Debt supplements	1200	Local government
Debt supplements	1200	Social security funds
Debt supplements	2100	Non-financial corporations
Debt supplements	2210	Households - Sole proprietor
Debt supplements	2210	Households - Physical person
Debt supplements	2200	Non-profit institutions serving

Contextual help

Navigation buttons

Close \ Delete record

9. Smart delete

Interface Interface

Delete item lines easily in 1 clic
 Double clic the icon to remove all the line of the table

TPTIBS_L1_201701_DSE0012355_DSE0012345_20170125_001.xml

reportedLine	securityID	percentageControl	CurrencyQuoted											
LineID	Item	Country	Currency	Sector	Code Type	Code	Hold Security Type	Custodian Bank Country	Debt Equity	Quotation Type	Nominal Amount	Nominal Currency	Number Of Units	Reported Amount
Edit Line	1-003000	XX	XXX	90000	1	FR0000133308	01	AD	debt	1	1 000.00	USD		3 000.00
Edit Line	1-003000	XX	XXX	90000	1	FR0003500008	01	AD	debt					3 500.00
Edit Line	1-003000	XX	XXX	90000	1	US5949181845	01	AD	debt					7 500.00
Edit Line	2-002050	XX	XXX	90000	1	CH0044328745	05		debt	2			14.00	10 000.00
Edit Line	2-003000	XX	XXX	90000	1	CH0102993182	04		debt	1			14.00	5 000.00
Edit Line	2-003000	XX	XXX	90000	1	CH0114405324	04		debt	1				10 000.00
Edit Line	2-C05000	XX	XXX	90000	1	IE0004462817	04		equity	2			85.00	20 058 845.00
Edit Line	2-C05000	XX	XXX	90000	2	IE0004462817	04		equity	2			9 000.00	20 058 845.00
Edit Line	2-C05000	XX	XXX	90000	2	JP3946600008	04		equity	2			4 500.00	39 718 816.00
Edit Line	2-C05000	XX	XXX	90000	2	RCS CODE2	04		equity	2			120.00	755 022.00
Edit Line	1-003000	XX	XXX	90000	2	RCS CODE3	02	BE	Debt	1	5 522 014.00	EUR		755 022.00

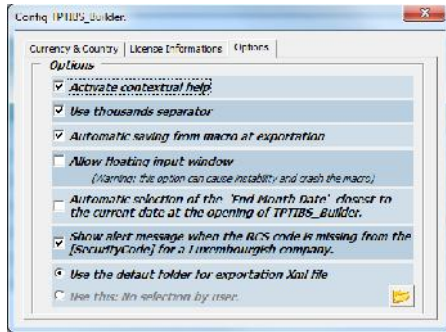
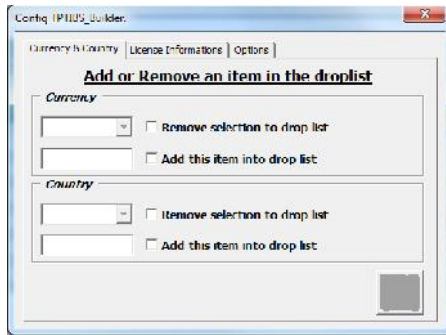
TPTIBS Builder: Confirmation!

Confirm the deletion of the selected data: [A21.AF23]

Out Non

10. Admin functions

- Consolidation Interface** Allow to add or remove a currency or country code
Displays licence information
- Options** Allow to configure various options for the user : activate contextual help, display thousand separator, save macro at export, auto-select report date based on current date, define a default folder to generate the reports, etc ...
- Quick-Update** Set the Quick-Update date file structure & options



11. Help contact info

Support Need help ? 1 click contact info window

