

U11 Builder is an advanced and intelligent capture & generation tool developed by U IT for the management of the CSSF U11 fund reports.
The tool was developed taking into consideration many aspects which are described in the following pages

Key features

Capture interface

- Clear and user-friendly interface**
- Multi-user**
- Extended controls**
- Save all captured data by UCI & month**
- Copy data from previous month**
- Activity logging**
- Contextual help**
- UCI static information pre-filling**
- Extra backup of all generated reports**

Management

- Dedicated status by UCI & month**
- Yearly status summary table**
- Export summary to Excel, CSV, PDF**
- Easy installation (portable application)**

General overview

Options & language selection

Yearly status table

UCI's name

U1.1 report's name

Reporting date

Buttons bar

Capture panels

Reporting status by month

U11 Builder

Help Languages

Buttons bar

GROUPES PIXELLE FUNDS V - GROUPE
PIXELLE AGGRESSIVE

U11REP-B00000999-C00000001-00000003-202601-RAP-1769008443866.xml

Period : January 2026
Status : In progress

General information (1,2,3) Unit/Share Information (4,5) Information on investment income and expenses (6)

Name of the UCI: GROUPE PIXELLE FUNDS V - GROUPE PIXELLE AGGRESSIVE 2020

Reporting status: provisional report 1020

Valuation date: 2026-01-31 2050

Total NAV of the preceding ref. ...: 0 3010

Redemption frequency: 1 - Daily 2100

Reference month: 2026-01 1010

CSSF code of the sender: B00000999 1030

Net asset value calculation frequency: 19 - annual 2060

Total NAV of the ref. month: 60000 3020

Open / Closed-end: 1 - open-end investment funds 2110

Base currency of the UCI: EUR 2030

UCI Launch date: 2026-01-20 2070

Shares issued during the ref. month: 900 3030

Shares redeemed during the ref. ...: 960 3040

Shares distributed during the ref....: 1020 3050

CSSF code of the UCI: 000000001_00000003 2010

Legal entity identifier (LEI): 2040

Closing Date: 2080

Type of the declarant: 2011

Code of the declarant: 2012

Reason for closing: choose from list 2090

Sender's information

N°	Name of employee	Phone number	Email address
1	Employee1	352 123 456 789	employee1@mycompany.com

Comments - (not more than 1024 characters)
new values for this month.

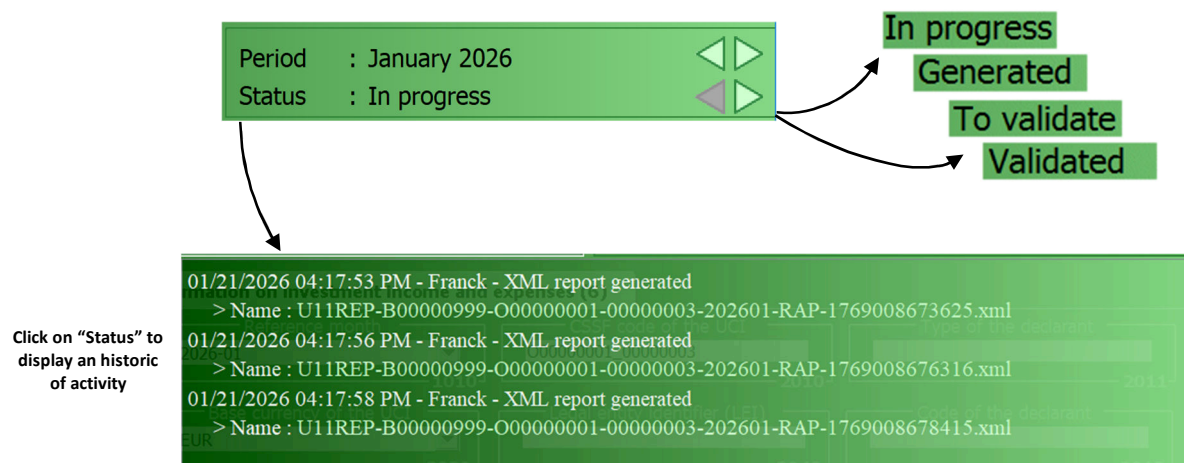
1040 - 1040 - 1050 2060

Version 2.0.0_BETA (Prod)

UCI's name	Visibility	Important information on the UCI and the currently edited month clearly visible
U1.1 report's name	Visibility	Auto-updated reporting filename
Reporting date	Consolidation	Auto-fill UCI reference data as per to the CSSF last listing
	Consolidation	Limit UCI selection to all manageable funds and sub-funds

GROUPE PIXELLE FUNDS V - GROUPE PIXELLE AGGRESSIVE	U11REP-B00000999-000000001-00000003-202601-RAP-1769008443866.xml	
	Period	: January 2026
	Status	: In progress

Reporting status by month	Feature	Manually or semi-automatic "Status" information
	Consolidation	Save an individual status by UCI and by month for management purposes
	Consolidation	Keep an historic of the status changes and report's generation for each month



Options & language selection	Interface	Choose between English / French languages
	Interface	Full translation (text buttons, comments, infos / warnings / error messages)

Languages
 Français
 English

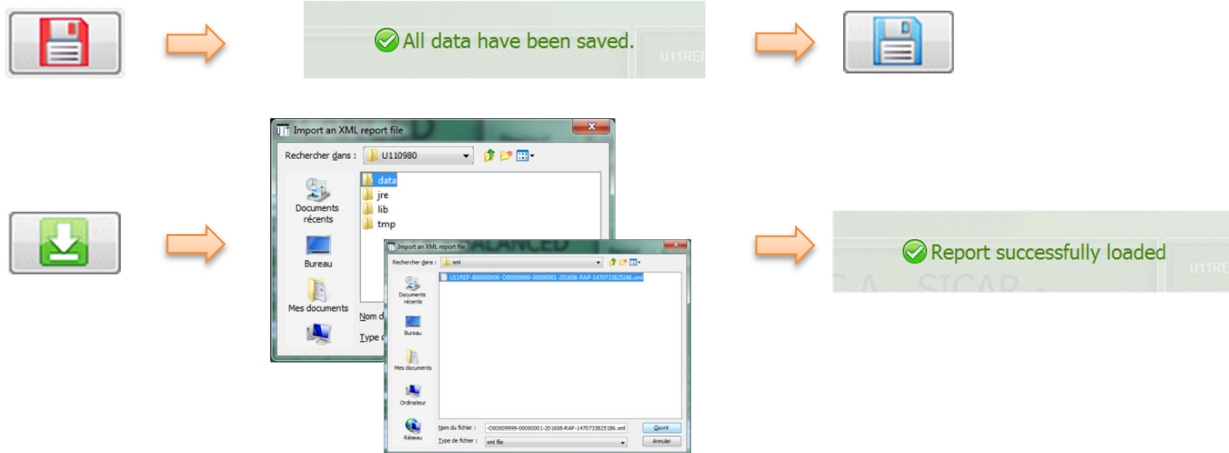
GROUPE PIXELLE FUNDS V - GROUPE PIXELLE AGGRESSIVE		U11REP-B00000999-000000001-00000003-202601-RAP-1769008443866.xml Période : Janvier 2026 Statut : En cours	
Information générale (1,2,3) Informations sur l'unité / classe d'actions (4,5) Informations sur les revenus et les dépenses d'investissement (6)			
Nom de l'UCI GROUPE PIXELLE FUNDS V - GROUPE PIXELLE AGGRESSIVE	Mois de référence 2026-01	Le code CSSF de l'UCI 000000001_00000003	Type du déclarant 2010
Statut du rapport rapport provisionnel	Le code CSSF du déclarant 800000999	Devise de base de l'UCI EUR	Entité légale de l'identifiant (LEI) 2040
Code du déclarant 2012			

GROUPE PIXELLE FUNDS V - GROUPE PIXELLE AGGRESSIVE		U11REP-B00000999-000000001-00000003-202601-RAP-1769008443866.xml Period : January 2026 Status : In progress	
General information (1,2,3) Unit/Share Information (4,5) Information on investment income and expenses (6)			
Name of the UCI GROUPE PIXELLE FUNDS V - GROUPE PIXELLE AGGRESSIVE	Reference month 2026-01	CSSF code of the UCI 000000001_00000003	Type of the declarant 2010
Reporting status provisional report	CSSF code of the sender 800000999	Base currency of the UCI EUR	Legal entity identifier (LEI) 2040
Code of the declarant 2012			

Save / Load buttons

Interface
Visibility
Consolidation
Interface

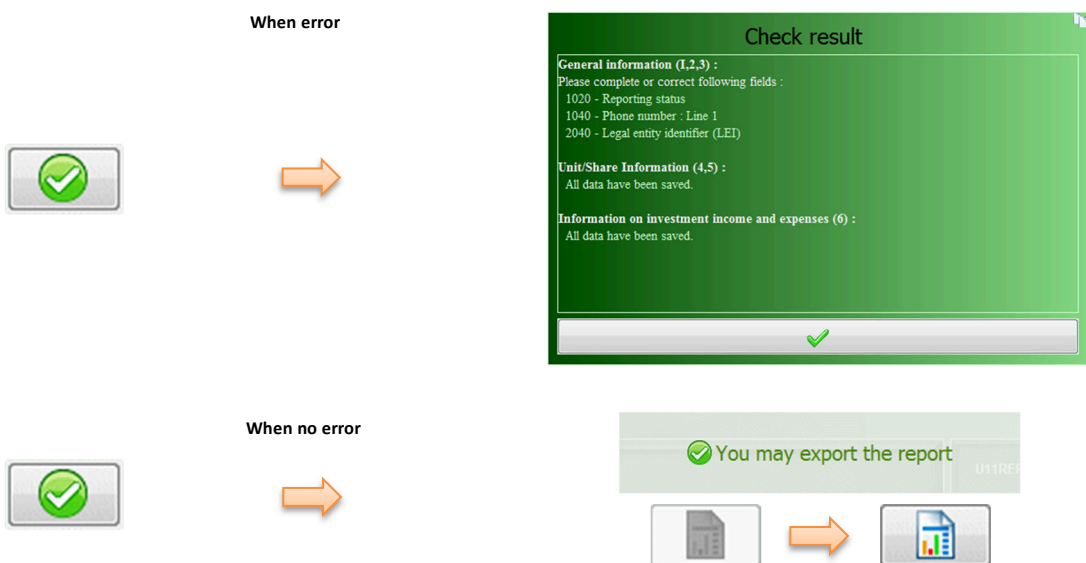
Save all captured data, for each UCI and each month including uncomplete reports
"Save" button becomes red for any change made on the data
Auto-save all captured data when changing month or selecting another UCI
Import a U11 XML report



Check & control data

Interface
Interface
Visibility

Verify the integrity of the data
Enable and allow the export button on successful validation of the data
In case of error in the validation, displays a detailed information window



Export & generate report

Interface
Consolidation
Interface

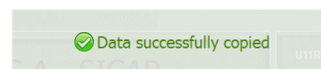
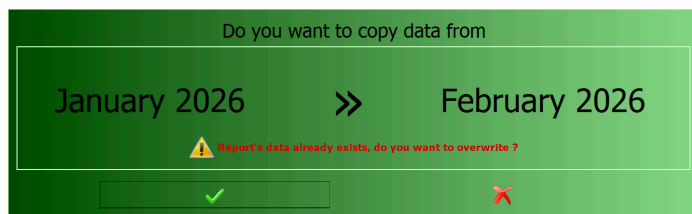
Available only after a successful control, allow to generate the report
Log report's generation activity for each months and UCI
Default export directory can be configured in the options



Copy report

Feature
Consolidation

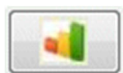
Allow to copy the current's month data to the next one
Warn and ask confirmation if data already exist



Yearly status table

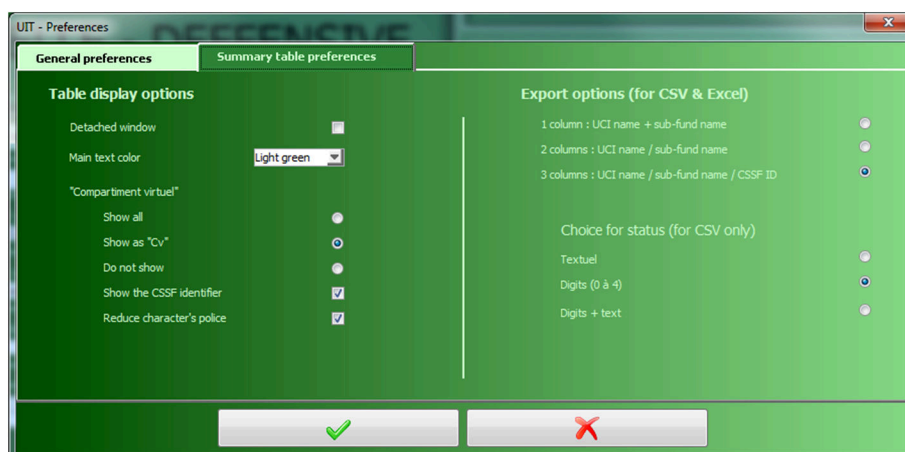
Feature
Visibility
Interface
Feature
Interface
Feature

Display the status of all the UCI's report in one single table
5 different status represented by colored square
Double click on one colored square to open edition for the selected UCI & month
Export in CSV, to Excel or print to PDF
Windows can be detached from main capture screen
Extra options to customize the display or the export



Help Languages

- Open guidelines
- Import license
- Administrator
- Preferences
- About



Panels overview

UIT - U11 Builder

Help Languages

General information panel

Information on investment income and expenses panel

Unit/share Information panel

Contextual help

Unit/share capture panel

Direct table edition

General information (1,2,3) Unit/Share Information (4,5) Information on investment income and expenses (6)

General information on the unit/share class

N°	Name	CSSF c...	Currency	ISIN	Launch...	Closing...	Reason...	FX	Interes...	Other	Outsta...	NAV UCI	NAV base	NR base	Proceeds	Payments	Distribu...	Amoun...	Amoun...	Invest...	Income...	Expens...
1	DISTRIBUTION	0002	EUR	US0378...	2026-0...						100	100	100	101.5	150	160	170	100	100	1	725	1400
2	G CAPITALISAT...	0005	EUR	US0378...	2026-0...			true	true	true	100	100	100	101.5	150	160	170	100	100	1	725	1400
3	G DISTRIBUTION	0006	EUR	US0378...	2026-0...			true	true	true	100	100	100	101.5	150	160	170	100	100	1	725	1400
4	I CAPITALISATI...	0008	EUR	US0378...	2026-0...			true	true	true	100	100	100	101.5	150	160	170	100	100	1	725	1400
5	X CAPITALISAT...	0003	EUR	US0378...	2026-0...			true	true	true	100	100	100	101.5	150	160	170	100	100	1	725	1400
6	X DISTRIBUTION	0004	EUR	US0378...	2026-0...			true	true	true	100	100	100	101.5	150	160	170	100	100	1	725	1400

Period : January 2026
Status : In progress

U11REP-B00000999-000000001-00000003-202601-RAP-1769009238033.xml

General information on the unit

Name: DISTRIBUTION CSSF code: 0002

Currency: EUR ISIN: US0378331005

Launch date: 2026-01-21 Closing date:

Reason closing: Interest Rate: ☒ True FX: ☒ True Other: ☒ True

Investor base: 1

Financial information on the unit

Outstanding: 100 NAV UCI: 100

NAV base: 100 NR base: 101.5

Proceeds: 150 Payments: 160

Distributions: 170 Amount UCI: 100

Amount base: 100 Income in the base currency of t...: 725

Expenses in the base currency of ...: 1400

Operations

UIT

General Information panel

Interface
Visibility
Interface

First panel, general information
Highlights mandatory fields still empty or in error
For null reports, disable the 2 other panels

Fill or review & correct
highlighted fields

Unit/share information panel

Direct table edition

Visibility
Interface
Visibility
Feature
Interface

Display all information on one single table, can be scrolled
Allow to capture data directly on the table
Highlight all missing or wrong mandatory fields
Allow importation of raw values to fill the table in one action
Copy/paste one line in 2 mouse click

Edit in the table or double clic
on line number to open the
capture sub-panel

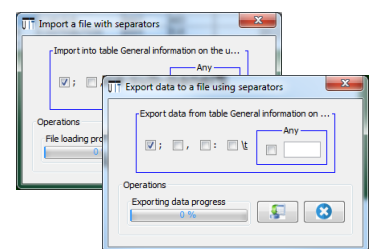
Fill or review & correct
highlighted fields

General information (1,2,3)			Unit/Share Information (4,5)			Information on investment income and expenses (6)																
General information on the unit/share class																						
N°	Name	CSSE C...	Currency	ISIN	Launch...	Closing...	Reason...	FX	Interes...	Other	Outsta...	NAV UCI	NAV base	NR base	Proceeds	Payments	Distrib...	Amoun...	Amoun...	Invest...	Income...	Expens...
1	DISTRIBUTION	0002	EUR	US0378...	2026-0...			true	true	true	100	100	101.5	150	160	170	100	100	1	725	1400	
2	G CAPITALISAT...	0005	EUR	US0378...	2026-0...			true	true	false	100	100	101.5	150	160	170	100	100	1	725	1400	
3	G DISTRIBUTION	0006	EUR	US0378...				true	true	true	100	100	101.5	150	160	170	100	100	1	725	1400	
4	I CAPITALISAT...	0008	EUR	US0378...	2026-0...			true	true	true	100	100	101.5	150	160	170	100	100	1	725	1400	
5	X CAPITALISAT...	0003	choose...	US0378...	2026-0...			true	true	true	100	100	101.5	150	160	170	100	100	1	725	1400	
6	X DISTRIBUTION	0004	EUR	US0378...	2026-0...			true	true	true	100	100	101.5	150	160	170	100	100	1	725	1400	

Right click to open contextual menu.
Copy/paste current line



Import or
export the
table data.



Unit/share capture panel

Interface
Visibility
Consolidation

Dedicated capture sub panel with standard table filling functions
Highlight mandatory fields missing or wrongly captured
Only existing unit/share names can be selected, based on the CSSF listing

Choice is limited by the application to the list of existing unit/share names possible

Navigate between records

Save and control record

Close panel

Add or copy a record

Delete record

Information on investment income and expenses panel

Interface
Visibility

Third capture panel with optional information to fill
Highlight fields with wrong values

General information (1,2,3)		Unit/Share Information (4,5)		Information on investment income and expenses (6)													
Dividends on shares...	500	6010	of which from Lu...	70	6011	Dividends on UCI ...	500	6020	of which from Lu...	99	6021	Interest on bond...	500	6030	of which from Lu...	0	6031
Interest on loans...	500	6040	Bank interest (pr...	300	6041	of which from Lu...	100	6042	Other interest	300	6043	Other interest - ...	150	6044			
Other income	750	6050	Rental income	350	6051	Commission income	350	6052	Other	50	6053						
Charges	4800	6060	Advisory and/or ...	500	6061	Depositary commi...	500	6062	UCI administratio...	500	6063	Audit and inspect...	500	6064	Distribution fees	500	6065
Performance fees	500	6070	Other expenses	3000	6080	Interest paid	500	6081	Personnel expenses	500	6082	Rental expenses	500	6083	Amortisation	500	6084
Net realised	500	6090	Net unrealised	500	6100												

Contextual help

Interface

Displays an optional contextual help on all capture fields

Let the cursor over any field of the 3 mains panels or the sub-table capture panels to display the contextual help.
Can be disabled it in the options

Enabling/Disabling tips ☒

Delay to dismiss tips 5 sec

Help Menu

Interface

Interface

Consolidation

Consolidation

Preference : various options to set in the preferences

About window displays license information and support contact details

Allow to enter user's own currency conversions

Set an extra location to save a copy of all generated reports